

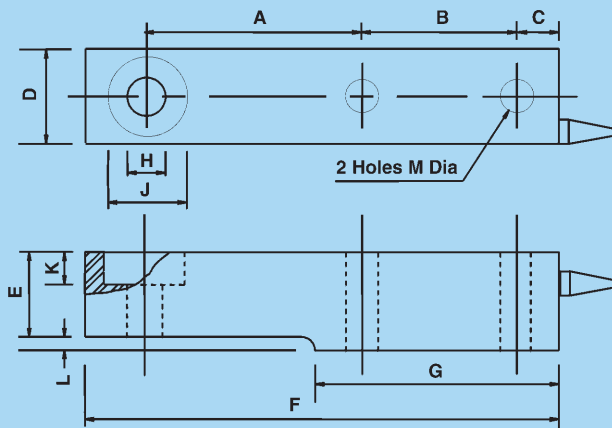
technical specification sheet

Series VC2000

| Grade | Commercial | C1** | C3* | Units |
|---------------------------------|-----------------|--------------------------|----------------|--------|
| Standard Load Ranges | | 5000, 10,000, 15,000 | | kg |
| Full Load Output | 2.0 (+/- 0.25%) | 2.0 (+/- 0.25%) | 2.0 (+/- 0.1%) | mV/V |
| Excitation Recommended | | 10 | | V |
| Excitation Maximum | | 15 | | V |
| Safe Service Load | | 150 | | % |
| Ultimate Load | | 300 | | % |
| Safe side Load | | 50 | | % |
| Combined Error | < +/- 0.070 | < +/- 0.050 | < +/- 0.020 | % |
| Repeatability | < +/- 0.020 | < +/- 0.020 | < +/- 0.010 | % |
| V. min | N/A | E.Max/7.000 | E.Max/8.000 | |
| Minimum Tare or Dead Load | N/A | 2% E Max | | |
| Output at Zero load | < +/- 2.0 | < +/- 2.0 | < +/- 1.0 | % |
| Input Resistance | | 410 +/- 20 | | ohms |
| Output Resistance | | 350 +/- 2 | | ohms |
| Operational Temperature Range | | -20 to +80 | | °C |
| Compensated Temperature Range | | -10 to +40 | | °C |
| Temperature Coefficient on Zero | < +/- 0.0050 | < +/- 0.0050 | < +/- 0.0017 | %/°C |
| Temperature Coefficient on Span | < +/- 0.0050 | < +/- 0.0030 | < +/- 0.0010 | %/°C |
| Creep 30 mins | < 0.050 | < 0.050 | < 0.015 | % |
| Environmental Protection | | IP 68 | | |
| Cable length Standard | | 3 (5 on 5 & 10 te units) | | m |
| Insulation | | >500 at 100 Vdc | | M ohms |

All percentages are related to Full Rated Load

*C2 version also available

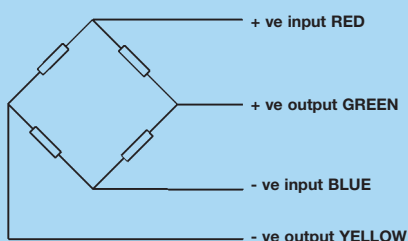


| Capacity (kg) | A | B | C | D | E | F | G | H | J | K | L | M | Wt(kg)* |
|---------------|-------|------|------|------|------|-------|-------|------|------|------|------|------|-----------|
| 5000 | 123.7 | 66.5 | 20.6 | 47.4 | 47.5 | 235 | 117.8 | 25.4 | 41.4 | 15.9 | 14.5 | 22.2 | 2.3 |
| 10000, 15000 | 139.7 | 82.6 | 25.4 | 58 | 61 | 279.4 | 144.7 | 31.8 | 51.1 | 20.7 | 16 | 27 | 5.0 (8.0) |

All dimensions in mm. *Load cell weight only.

Electrical Connections

Via 4 core 16 / 0.2 mm screened polyurethane cable.



Electrical Connections

Via 4 core 16 / 0.2 mm screened polyurethane cable.

Screen not connected electrically to load cell.

Construction

Load cell and loading assembly manufactured from 17-4PH stainless steel heat treated to H900 condition - 1379N/mm² UTS.

Options

'Cellmaster' stainless steel loading assembly.

Our policy is one of continuous product enhancement. We therefore reserve the right to incorporate technical modifications without prior notification.

Distributed by

Thames Side - Maywood

Thames Side-Maywood Limited

17 Stadium Way, Reading

Berkshire RG30 6BX UK

Tel: +44(0)118 9458200

Fax: +44(0)118 9458225

E-mail: sales@thames-side.co.uk

Web: www.thames-side.co.uk

A
HALMA
GROUP
COMPANY



Approval No. 925394

Series VC 2000

Shear beam load cell for commercial weighing

capacities 5000 kg to 15,000 kg



stainless steel load sensor

stainless steel loading assembly available

fully welded construction sealed to IP 68

5 year warranty

ease of installation

recessed loading point

approved to OIML IR 60 1991

CENELEC approved to EEx ia IIC T6

A range of stainless steel load cells approved for commercial weighing to OIML IR 60 3000 divisions. Utilizing welded diaphragms to provide complete hermetic sealing, the units offer high accuracy together with excellent long term stability.

The VC 2000 is also available with intrinsically safe certification EEx ia IIC T6 to CENELEC Standard EN50020 : 1995



Thames Side - Maywood

...your specialist load cell partner