

Series T95 LA

Folded shear beam load cell for high accuracy weighing

capacities 2 te to 20 te



stainless steel load sensor

auto-phoretic toughened surface (assembly only)

fully welded construction sealed to IP 68

5 year warranty

ease of installation

integral lift off prevention

load cell is always in tension

ideal in vibrating applications

OIML C3 approval available

unique damping feature

The T95 LA range comprises of both stainless steel and alloy steel load cells complete with toughened auto-phoretic finish loading assembly. Although the assembly is used in **compression**, the cell is mounted in a pendulum and operates in **tension**. This ensures that the load point is always maintained through the central axis of the cell, even when the assembly is subjected to considerable movement or misalignment.

The T95 LA is most suitable for high accuracy applications and where movement or vibration are present. eg. mixers, catalyst vessels, weighing platforms, axle weighers and weighbridges. It is also available with intrinsically safe certification ATEX EEx ia IIC T6 to CENELEC Standards. Certified for use in both Gas and Dust Zones.



Thames Side - Maywood

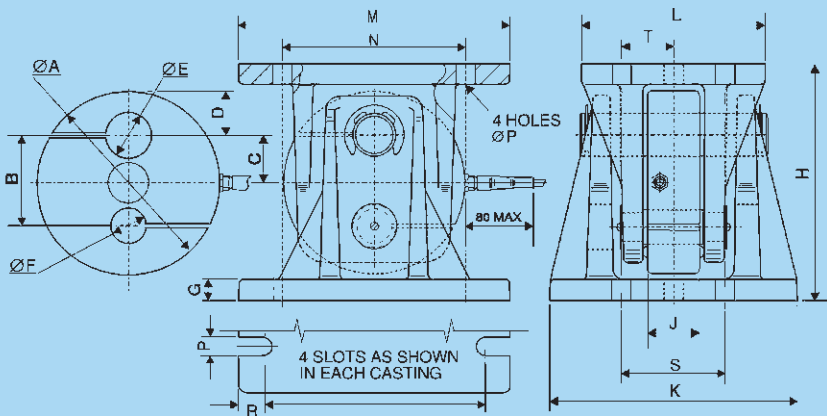
...your specialist load cell partner

technical specification sheet

Series T95 LA

| | Accuracy Class | | Units |
|------------------------------------|----------------|-----------------------------|--------------|
| | Commercial | C3# | |
| Rated Output | 2 | 2 | mV/V ± 0.25% |
| Combined Error | < ± 0.05 | In accordance with OIML R60 | %* |
| Non-repeatability | < ± 0.02 | | %* |
| Temperature Effect on Zero Balance | < ± 0.0025 | | %*/°C |
| Temperature Effect on Span | < ± 0.0035 | | %*/°C |
| Compensated Temperature Range | -10 to +40 | | °C |
| Operating Temperature Range | -40 to +80 | -40 to +80 | °C |
| Safe Overload | 150 | 150 | %* |
| Ultimate Overload | 300 | 300 | %* |
| Zero Balance | < ± 1 | < ± 1 | %* |
| Input Resistance | 380 | 380 | Ω ± 30 |
| Output Resistance | 350 | 350 | Ω ± 1.5 |
| Insulation Resistance | > 5000 | > 5000 | MΩ @ 100V |
| Recommended Supply Voltage | 10 | 10 | V |
| Maximum Supply Voltage | 15 | 15 | V |

*With respect to rated output



| Range (kg) | A | B | C | D | E | F | G | H | J | K | L | M | N | P | Q | R | S | T |
|--------------|-----|----|------|----|------|----|----|-----|----|-----|-----|-----|-----|----|-----|----|-----|----|
| 2000 - 10000 | 134 | 66 | 35 | 32 | 32.5 | 26 | 15 | 174 | 38 | 182 | 135 | 200 | 135 | 16 | 170 | 15 | 70 | 35 |
| 20000 | 187 | 87 | 40.5 | 53 | 48 | 36 | 22 | 245 | 57 | 252 | 186 | 260 | 185 | 20 | 218 | 21 | 100 | 50 |

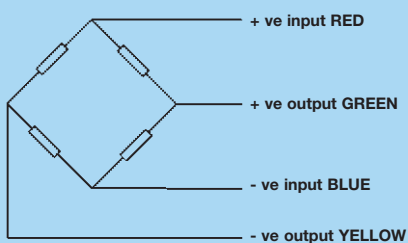
All dimensions in mm.

Note: Cell performance is characterised when tested in the specified loading assembly.

Electrical Connections

Via 4 core, 10m (20m for 20000kg model), 6mm dia., screened polyurethane cable.

Screen not connected electrically to load cell.



Shipping Weights: (kg)

Cell = 4 (10000), Cell = 11.5 (20000)
LA 95 = 14 (10000), LA95 = 38.5 (20000)

Construction

Load Cell manufactured from 17-4PH stainless steel heat treated to H900 condition - 1379N/mm² UTS.

Options

#For C3 applications there is an alloy steel version available.
M16 conduit adaptor for connecting additional cable protection.
Load cell only (model T95).

Our policy is one of continuous product enhancement. We therefore reserve the right to incorporate technical modifications without prior notification.

Distributed by

Thames Side - Maywood

Thames Side-Maywood Limited

2 Columbus Drive, Summit Avenue,
Southwood, Farnborough,
Hampshire GU14 0NZ

Tel: +44(0) 1252 555811

Fax: +44(0) 1252 375394

Email: sales@thames-side.co.uk

Web: www.thames-side-maywood.com

