

Series 740

Compression column load cell for weighbridges

capacities 15 tonnes - 40 tonnes



stainless steel load sensor

self-centering column design

hermetically welded and sealed to IP68

1 year warranty

lightning protection

3000 divisions OIML R60 Class C

mounting accessories available

pre-corner adjustment optimised for multi-cell systems

This self centering column load cell is manufactured from high quality stainless steel.

A comprehensive range of capacities is available in one body size.

The cell is designed specifically for weighbridge applications.



Thames Side - Maywood

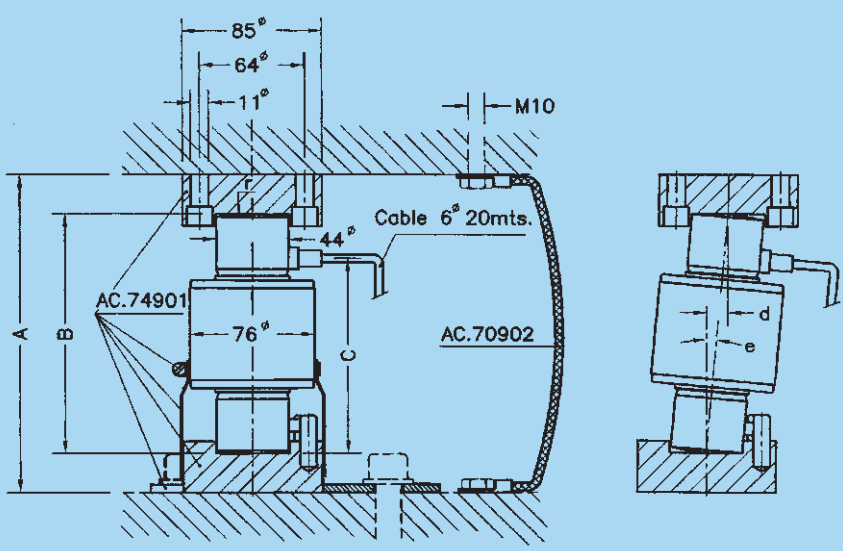
...your specialist load cell partner

technical specification sheet

Series 740

	Load Cell Capacity	units
Standard Load Ranges	15, 20, 30, 40	tonnes
Rated Output	2	mV/V ± 0.1%
Combined Error	< ± 0.017	%*
Non-repeatability	< ± 0.015	%*
Creep (30 minutes)	< ± 0.016	%*
Temperature Effect on Zero Balance	< ± 0.01	%*/°C
Temperature Effect on Sensitivity	< ± 0.006	%*/°C
Compensated Temperature Range	-10 to +40	°C
Operating Temperature Range	-30 to +70	°C
Safe Overload	150	%*
Ultimate Overload	300	%*
Zero Balance	< ± 2	%*
Input Resistance	800	Ω ± 30
Output Resistance	700	Ω ± 3
Insulation Resistance	> 5000	MΩ @ 100V
Recommended Supply Voltage	10	V
Maximum Supply Voltage	15	V
Environmental Protection	IP68	-

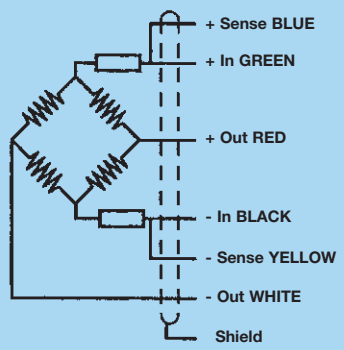
*With respect to rated output



Range	A	B	C	d. max.	e. max.	r. Radius Ball	Transport Weight kg
15 tonne	200	150	123	13	5°	130	2
20 tonne	200	150	123	13	5°	130	2.1
30 tonne	200	150	123	13	5°	160	2.3
40 tonne	200	150	123	13	5°	180	2.9

All dimensions in mm.

Electrical Connections



"Senses": 2 additional wires to maintain a constant voltage supply at the load cell when used with proper instrumentation. Use specially when long wires and wide temperature range.
Shield: Not connected to transducer body.

Construction
 Load cell manufactured from stainless steel.

Options
 Mounting accessories.

Our policy is one of continuous product enhancement. We therefore reserve the right to incorporate technical modifications without prior notification.

Distributed by

Thames Side - Maywood

Thames Side-Maywood Limited
 2 Columbus Drive, Summit Avenue,
 Southwood, Farnborough,
 Hampshire GU14 0NZ
 Tel: +44(0) 1252 555811
 Fax: +44(0) 1252 375394
 Email: sales@thames-side.co.uk
 Web: www.thames-side-maywood.com

