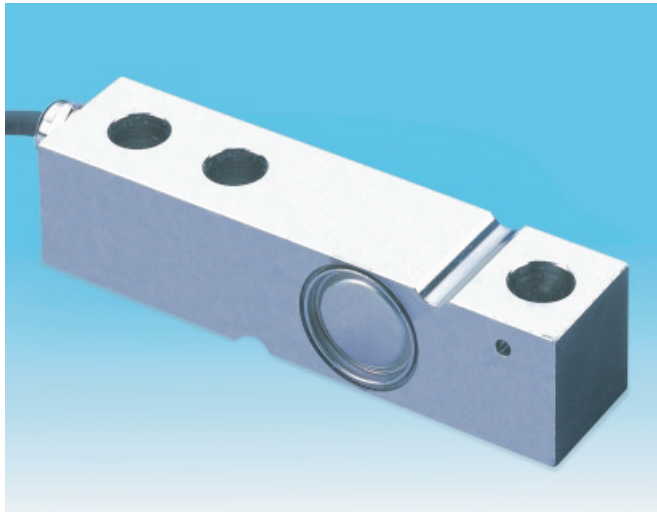


Series 350i

Shear beam load cells for industrial weighing

capacities 300 kg to 5,000 kg



stainless steel load sensor

5 year warranty

fully welded and hermetically sealed to IP68

industry standard configuration

corrosion resistant

optional load feet, mounting plates, load buttons and supports

3000 divisions OIML R60 Class C

optional anti-vibration loading assembly available

simple low cost installation

optional Levermount® loading assembly

This cell is typically used in weigh platforms, tank and vessel weighing, bag filling machines and conveyors, and is approved to OIML R60 3000 divisions.

Fully welded construction ensures total environmental sealing coupled with excellent long term stability. ATEX version available (Gas and Dust).



Thames Side - Maywood

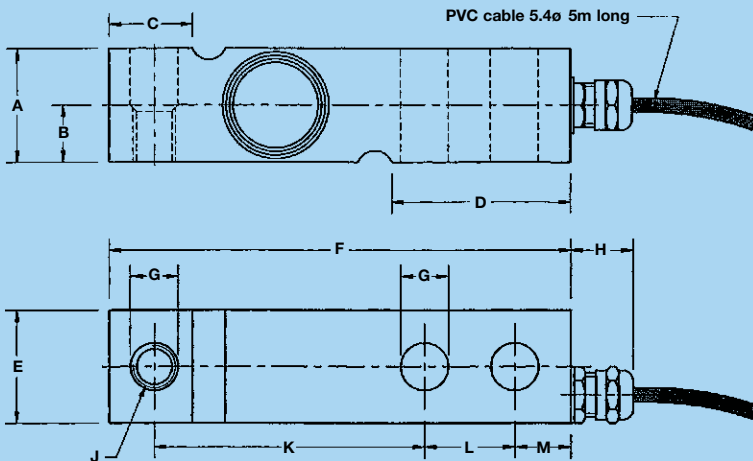
...your specialist load cell partner

technical specification sheet

Series 350i - Stainless steel, fully welded & hermetically sealed

	Load Cell Capacity	Units
Standard Load Ranges	300, 500, 1000,	kg
	2000, 3000, 5000	kg
Rated Output	2	mV/V ± 0.1%
Accuracy Class	3000	n.OIML
Combined Error	< ± 0.017	%*
Non-repeatability	< ± 0.015	%*
Creep (30 minutes)	< ± 0.016	%*
Temperature Effect on Zero Balance	< ± 0.01	%*/°C
Temperature Effect on Span	< ± 0.006	%*/°C
Compensated Temperature Range	-10 to +40	°C
Operating Temperature Range	-20 to +70	°C
Safe Overload	150	%*
Ultimate Overload	200	%*
Zero Balance	< ± 2	%*
Input Resistance	400	Ω ± 30
Output Resistance	350	Ω ± 1.5
Insulation Resistance	> 5000	MΩ @ 100V
Recommended Supply Voltage	10	V
Maximum Supply Voltage	15	V
Environmental Protection	350i=IP68 350a=IP66	-

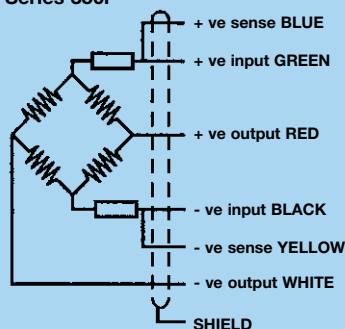
*With respect to rated output



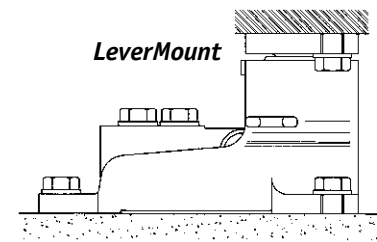
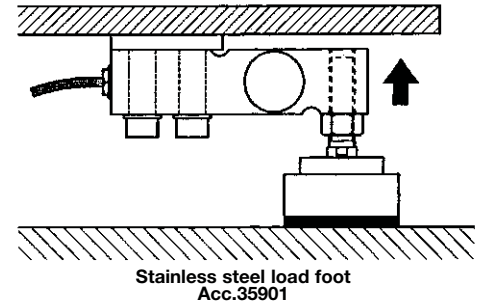
Range (kg)	A	B	C	D	E	F	Gø	H	J	K	L	M	Weight
300 - 2000	31.5	15	24.6	51.6	31.5	130	13.5	18	M12	76.2	25.4	15.8	0.9kg
3000 - 5000	48	-	37	70	38.5	171.5	20.5	18	-	95.2	38.1	19	2.2kg

All dimensions in mm.

Electrical Connections Series 350i



Load Foot for 350



Our policy is one of continuous product enhancement. We therefore reserve the right to incorporate technical modifications without prior notification.

Distributed by

Thames Side - Maywood

Thames Side-Maywood Limited

2 Columbus Drive, Summit Avenue,
Southwood, Farnborough,
Hampshire GU14 0NZ

Tel: +44(0) 1252 555811

Fax: +44(0) 1252 375394

Email: sales@thames-side.co.uk

Web: www.thames-side-maywood.com

